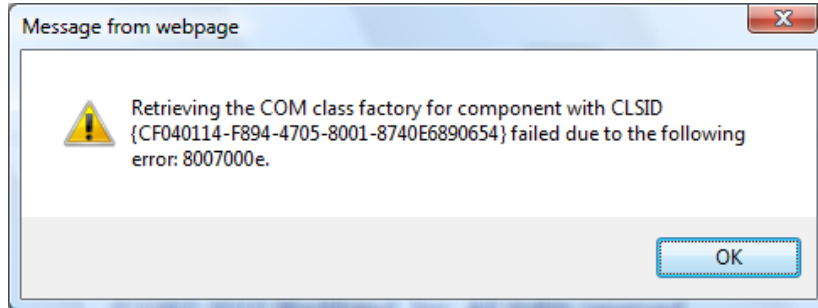


Dear Middle School Parents,

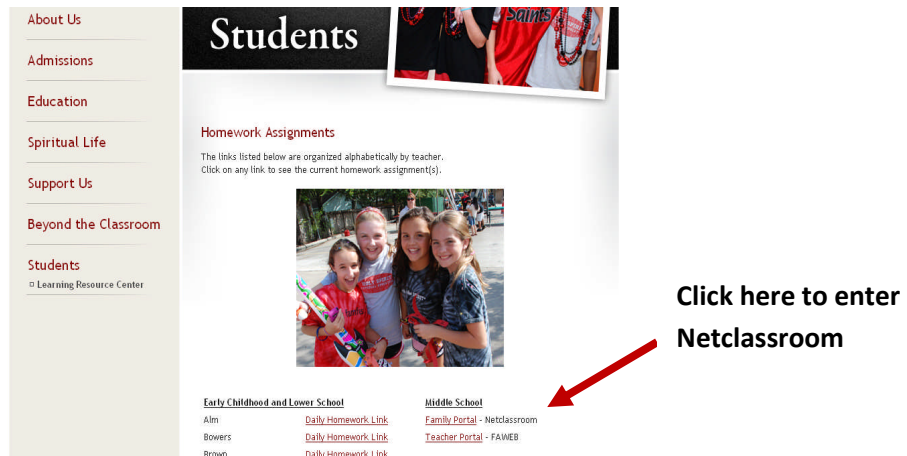
Please note that we are experiencing technical issues with logging into Netclassroom. When logging into the Family Portal from the HSES website some users are receiving the following error message:



We have contacted our host site, Blackbaud, regarding this issue and hope that this will be resolved in a timely manner. Thank you for your patience and understanding as we continue to improve upon the use and integration of our online grading system.

Just a reminder...please use the following instructions when logging on to Netclassroom:

1. Click the Family Portal - Netclassroom link from the HSES website



2. On the NetClassroom login screen, enter your online user ID and password

